

### Features

- Durable Housing for Logger
- 3-cup Anemometer
- 0 to 100 MPH (0 to 160KPH) Range
- 0.085 MPH Resolution at a 10 Second Sampling Rate
- $\pm 2.5\%$  Calibrated Accuracy over 10 to 100 MPH (16 to 160 KPH) Range
- 10 Year Battery Life
- 1 Second Reading Rate
- Multiple Start/Stop Function
- Ultra High Speed Download
- 500,000 Reading Storage Capacity
- Battery Life Indicator
- Optional Password Protection
- Field Upgradeable

### Benefits

- Simple Setup and Installation
- Minimal Long-Term Maintenance
- Long-Term Field Deployment

### Applications

- Alternative Energy Studies
- Meteorology/Climatology
- Wind Turbine Location Assessments

The Wind101A is a complete system to accurately measure and record wind speed. This low cost wind speed recording system comes complete with a data logger, weatherproof enclosure, a three-cup anemometer and all the necessary cabling to quickly get up-and-running. The logger can record up to 500,000 readings and the storage medium is non-volatile, solid state memory, providing maximum data security even if the battery becomes discharged.

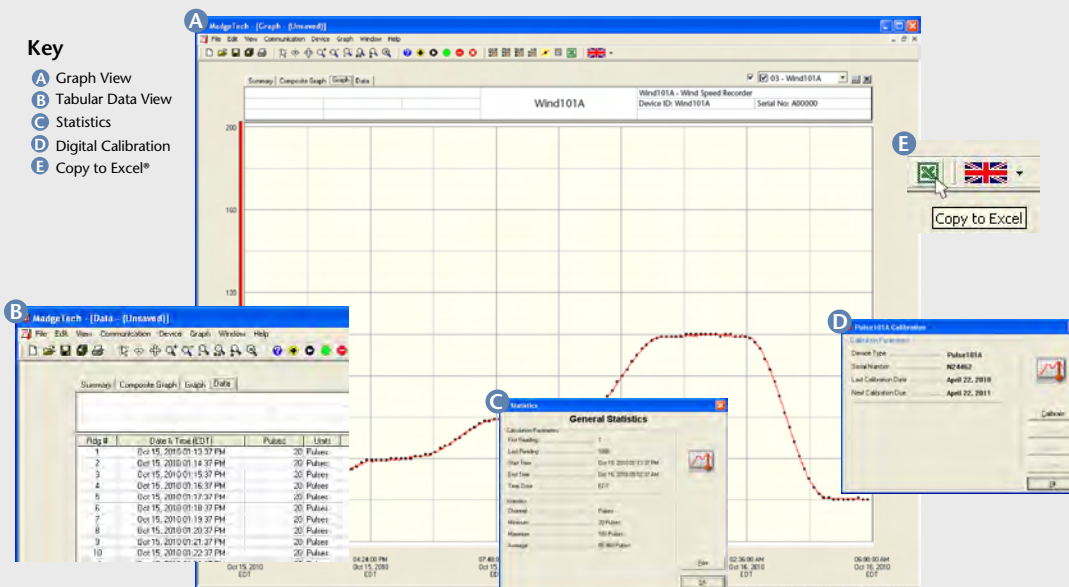


The device can be started and stopped directly from a computer using our user-friendly software.

## DATA LOGGER SOFTWARE

### Key

- A Graph View
- B Tabular Data View
- C Statistics
- D Digital Calibration
- E Copy to Excel®



### Software Features:

- Multiple graph overlay
- Statistics
- Digital calibration
- Zoom in/ zoom out
- Full time zone support
- Data annotation
- Min./Max./Average lines
- Data table view
- Automatic report generation
- Summary view
- Multilingual

# WIND101A SPECIFICATIONS\*

**Measurement Range:** 0 to 100 mph (0 to 45 m/s)

**Resolution:** 0.085 mph at 10 second reading interval

**Accuracy:** ±2.0 mph from 0 to 10 mph  
±2.5% of reading from >10 to 100 mph

**Starting Threshold:** 1.75 mph

**Reading Rate:** 1 reading every second to 1 every 24 hours

**Memory:** 500,000 readings; software configurable memory wrap  
250,000 readings in multiple start/stop mode

**Wrap Around:** Yes

**Start Modes:**

- Immediate start
- Delay start up to 18 months
- Multiple pushbutton start/stop

**Multiple Start/Stop Mode:** Start and stop the device multiple times without having to download data or communicate with a PC

**Multiple Start/Stop Mode** To start the device:

**Activation:** Press and hold the pushbutton for 5 seconds, the green LED will flash during this time. The device has started logging.

To stop the device:  
Press and hold the pushbutton for 5 seconds, the red LED will flash during this time. The device has stopped logging.

**Real Time Recording:** The device may be used with PC to monitor and record data in real-time

**LED Functionality:** Green LED blinks:  
10 second rate to indicate logging  
15 second rate to indicate delay start mode

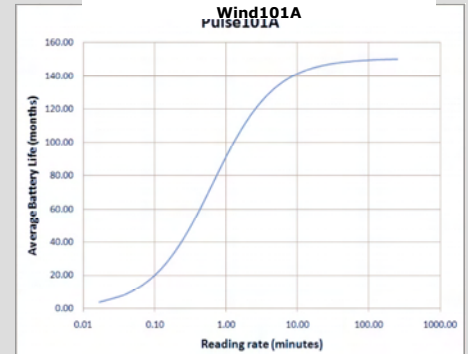
Red LED blinks:  
10 second rate to indicate low battery and/or full memory  
1 second rate to indicate an alarm condition

**Password Protection:** An optional password may be programmed into the device to restrict access to configuration options. Data may be read out without the password.

**Engineering Units:** See the Wind101A Quick Setup Guide for instructions on how to program windspeed engineering units.

**Battery Type:** 3.6V lithium battery included; user replaceable

**Battery Life:** 10 years typical, dependent upon frequency and duty cycle



**Time Accuracy:** ±1 minute/month (at 20°C/68°F, stand alone data logging)

**Computer Interface:** USB (interface cable included); 115,200 baud

**Software:** XP SP3/Vista/Windows 7

**Anemometer Operating** -55°C to +60°C (-67°F to +150°F);

**Environment:** 0%RH to 100%RH

**Data Logger Operating** -40°C to +80°C (-40°F to +176°F),

**Environment:** 0%RH to 95%RH non-condensing

**Anemometer** 2.1" height x 7.53" Diameter

**Dimensions:** (54mm height x 192 mm dia.)  
(mount post not included)

**Housing Dimensions:** 2.9" x 5.8" x 1.5"  
(74mm x 148mm x 39mm)

**Weight:** 18.1 oz (513 g)

**Materials:** ABS Plastic

**BATTERY WARNING:** WARNING: FIRE, EXPLOSION, AND SEVERE BURN HAZARD. DO NOT SHORT CIRCUIT, CHARGE, FORCE OVER DISCHARGE, DISASSEMBLE, CRUSH, PENETRATE OR INCINERATE. BATTERY MAY LEAK OR EXPLODE IF HEATED ABOVE 80°C (176°F).

## ORDERING INFORMATION

MODEL	DESCRIPTION
Wind101A	Wind speed recording system. Includes 3-cup anemometer with sensor connection cable (25'), data recorder, weatherproof enclosure and the IFC200 (USB) interface cable and software kit.
Wind101A-50	Wind speed recording system. Includes 3-cup anemometer with sensor connection cable (50'), data recorder, weatherproof enclosure and the IFC200 (USB) interface cable and software kit.
Wind101A-100	Wind speed recording system. Includes 3-cup anemometer with sensor connection cable (100'), data recorder, weatherproof enclosure and the IFC200 (USB) interface cable and software kit.
Wind101A-150	Wind speed recording system. Includes 3-cup anemometer with sensor connection cable (150'), data recorder, weatherproof enclosure and the IFC200 (USB) interface cable and software kit.
LTC-7PN	Replacement battery for Wind101A

ASK ABOUT  
OUR OTHER  
DATA  
LOGGERS

Temperature  
Humidity  
Pressure  
pH  
Level  
Shock  
LCD Display  
Pulse/Event/State  
Current  
Voltage  
Wireless  
Intrinsically Safe  
Spectral Vibration  
Motion

info@logicbus.com.mx

www.logicbus.com.mx

Alcalde #1822 Col. Miraflores C.P. 44270 Guadalajara, Jal. Mexico  
MX 01 (33) 3854-5975 y 3823-4349 USA 001 (858)-869-5401 (Chula Vista, CA. Office)