



# Quick Start Guide for WISE-7xxx Series Module

December 2016, Version 1.3

## Welcome!

Thank you for purchasing WISE-7xxx – one of the most cost-effective automation solutions for remote monitoring and control applications. This Quick Start Guide will provide you with minimum information to get started with WISE-7xxx. It is intended for use only as a quick reference. For more detailed information and procedures, please refer to the full user manual on the CD included in this package.

## What's In the Box?

In addition to this guide, the package includes the following items:



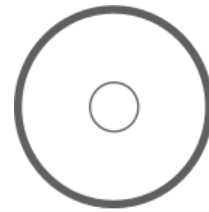
**WISE-71xx / WISE-790x  
Series Module**



**WISE-72xx  
Series Module**



**WISE-75xxM  
Series Module**



**Software Utility  
CD**

## Technical Support

- **WISE-71xx / WISE-72xx User Manual**

CD : \WISE-71xx\document\User Manual\

[ftp://ftp.icpdas.com/pub/cd/wise\\_cd/wise-71xx/document/user manual/](ftp://ftp.icpdas.com/pub/cd/wise_cd/wise-71xx/document/user manual/)

- **WISE-75xxM User Manual**

CD : \WISE-75xxM\document\User Manual\

[ftp://ftp.icpdas.com/pub/cd/wise\\_cd/wise-75xxM/document/user manual/](ftp://ftp.icpdas.com/pub/cd/wise_cd/wise-75xxM/document/user manual/)

- **WISE-790x User Manual**

CD : \WISE-790x\document\User Manual\

[ftp://ftp.icpdas.com/pub/cd/wise\\_cd/wise-790x/document/user manual/](ftp://ftp.icpdas.com/pub/cd/wise_cd/wise-790x/document/user manual/)

- **WISE Website**

<http://wise.icpdas.com/>

- **ICP DAS Website**

<http://www.icpdas.com/>

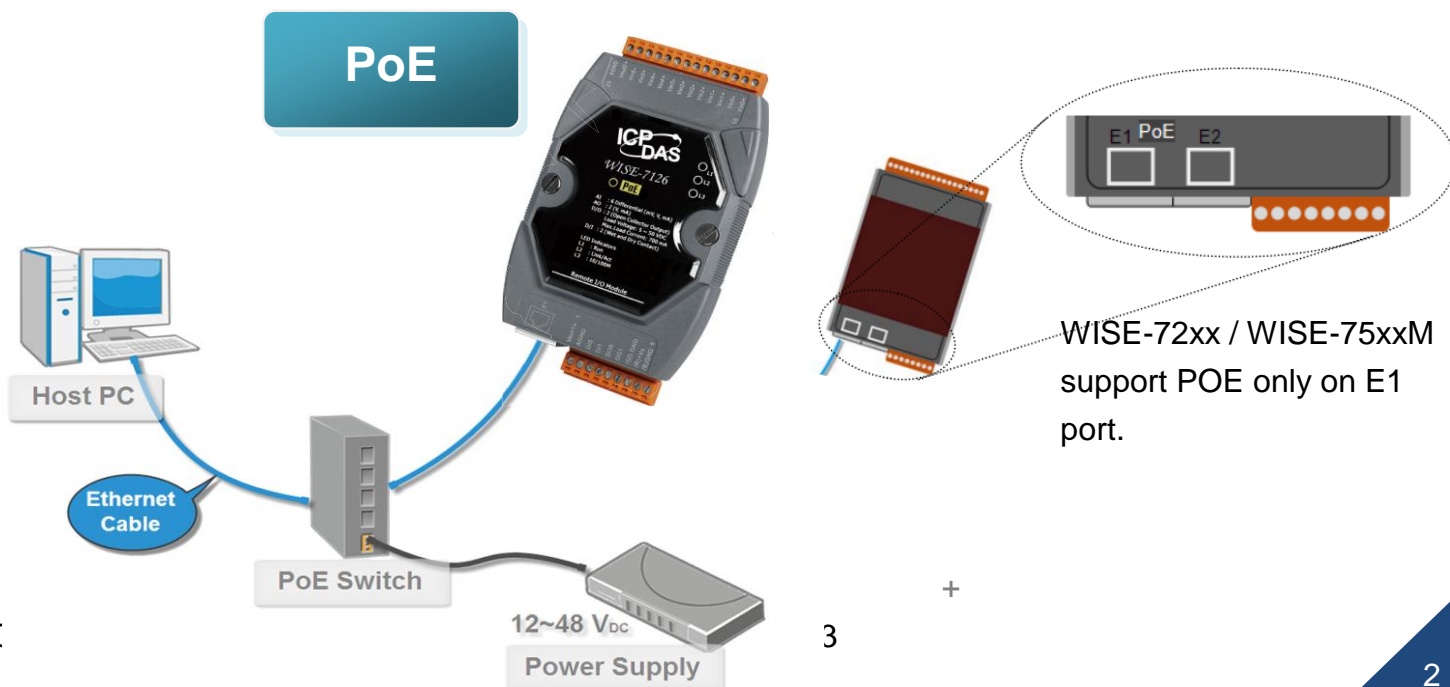
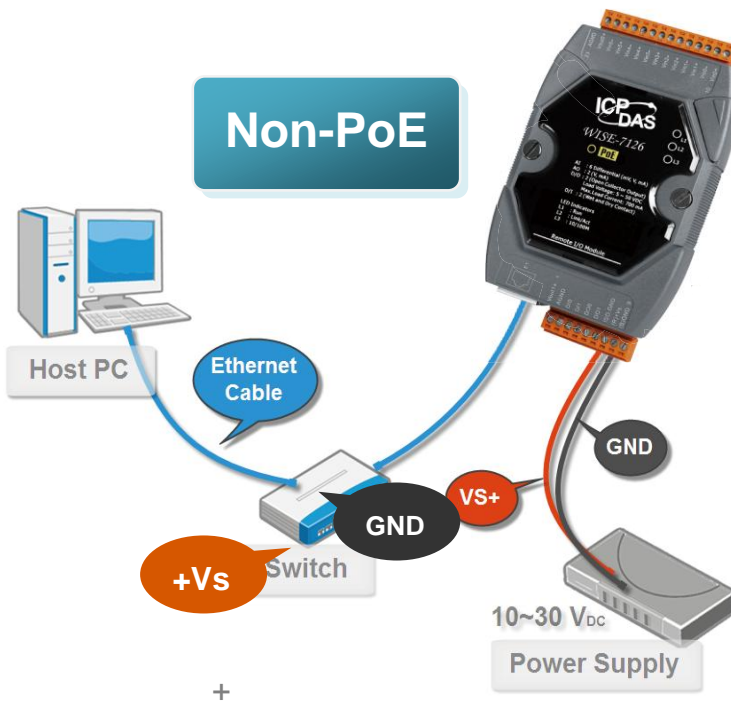


# 1 Configure Boot Mode

Make sure the switch is in the "Normal" position. (except WISE-75xxM)

# 2 Connect to Network, PC and Power

Connect to Ethernet hub/switch and PC via the RJ-45 Ethernet port.



# 3 Install MiniOS7 Utility

## Step 1: Get the MiniOS7 Utility tool



The MiniSO7 Utility can be obtained from companion CD or our FTP site:

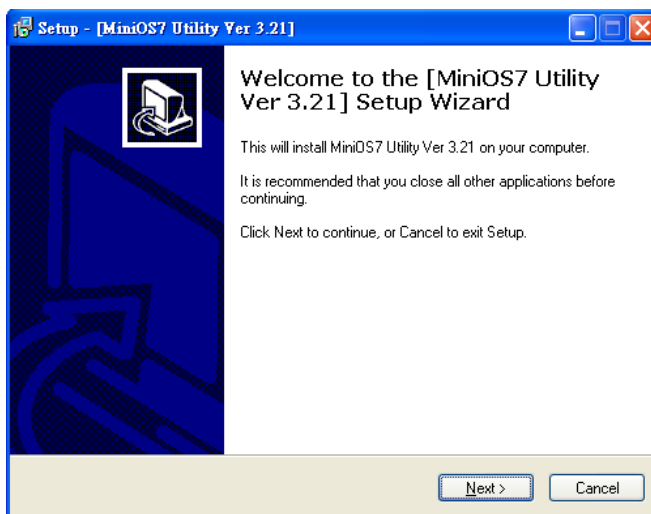
CD: \Tools\MiniOS7\_Utility\

[ftp://ftp.icpdas.com/pub/cd/wise\\_cd/tools/minios7\\_utility/](ftp://ftp.icpdas.com/pub/cd/wise_cd/tools/minios7_utility/)

## Step 2: Follow the prompts to complete the installation



After the installation has been completed, a new short-cut for MiniOS7 Utility will appear on the desktop.



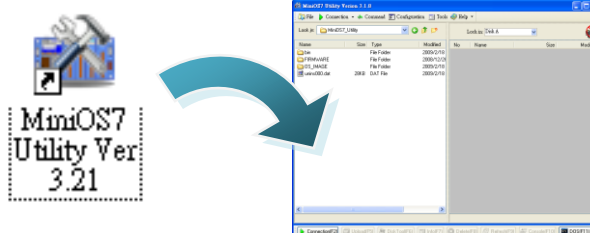
# 4 Assign a New IP by MiniOS7 Utility

WISE-7xxx comes with a default IP address; please assign a new IP address to the WISE module. The factory default IP settings are as follows:

Item	Default
IP Address	192.168.255.1
Subnet Mask	255.255.0.0
Gateway	192.168.0.1

## Step 1: Run MiniOS7 Utility

Double-click the MiniOS7 Utility shortcut on your desktop.



## Step 2: Press “F12” or click “Search” from the “Connection” menu

Press “F12” or click “Search” from the Connection menu, a MiniOS7 Scan dialog will appear and will display all the MiniOS7 modules that are currently connected to your network.

The “Search done” message will appear on status bar when searching process is finished.

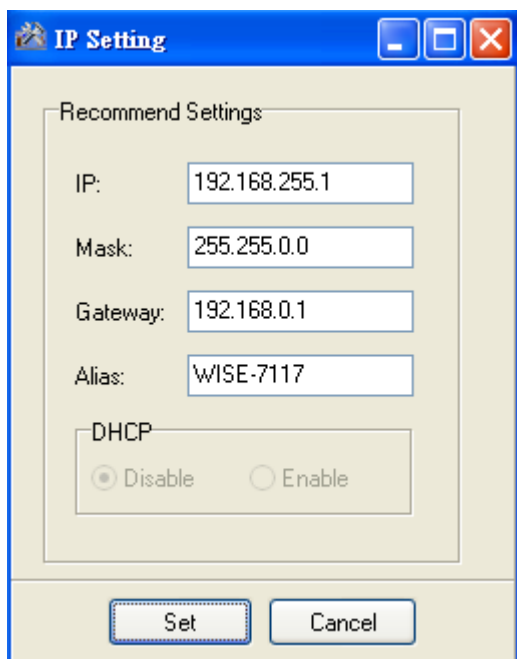
Type	IP/Port	Name	Alias
TCP BroadCast	192.168.255.1	WISE-7117	WISE-7117

**Step 3: Select the module name and then click “IP setting” from the toolbar**

Select the module name from the list of the fields, and then click “IP setting” from the toolbar.

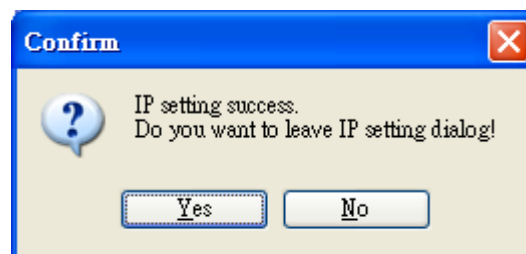


**Step 4: Assign a new IP address and then click “Set” button**



**Step 5: Click “Yes” button**

After completing the settings, click the “Yes” button to save and exit the procedure.



# 5 Go to WISE-7xxx Web Site to edit control logic.

Please follow the steps below to implement IF-THEN-ELSE control logic on controllers:

## Step 1: Open a browser

Open a browser (recommended internet browsers: Mozilla Firefox or Internet Explorer).

## Step 2: Type in the URL address of the WISE-7xxx

Make sure the IP address assigned is accurate (please refer to section 4: "Assign a New IP by MiniOS7 Utility). Type in the URL address of the WISE-7xxx module in the address bar.

## Step 3: Get on the WISE-7xxx web site

Get on the WISE-7xxx web site. Implement the control logic configuration in the order as indicated in the diagram.

The screenshot shows the WISE-7xxx web configuration interface. At the top, there is a navigation menu with three items: '1. Basic Setting', '2. Advanced Setting', and '3. Rules Setting'. Below this, there are three buttons: 'Channel Status', 'Upload from Module', and 'Download to Module'. The main content area is titled 'Welcome to ICP DAS WISE web configuration page' and includes a table of system information and a 'Configuration Procedure' section. The 'Configuration Procedure' section has five steps: 'Basic Setting', 'Advanced Setting', 'Rules Setting', and 'Download to Module', each with a description and a right-pointing arrow. Large blue numbers 1, 2, 3, and 4 are overlaid on the image to indicate the sequence of steps to follow.

Hardware Information	
WISE Engine Version	1.1
OS Version	2.02.9
Module Name	WISE-7117
DI channels	0
DO channels	4
AI channels	6
AO channels	0

Configuration Procedure	
Basic Setting	Set up Time, Ethernet, and Module type.
Advanced Setting	Configure channel attributes and additional features.
Rules Setting	Edit IF-THEN-ELSE logic rules.
Download to Module	Download the settings to the hardware device.

## Step 4: Edit Basic Settings

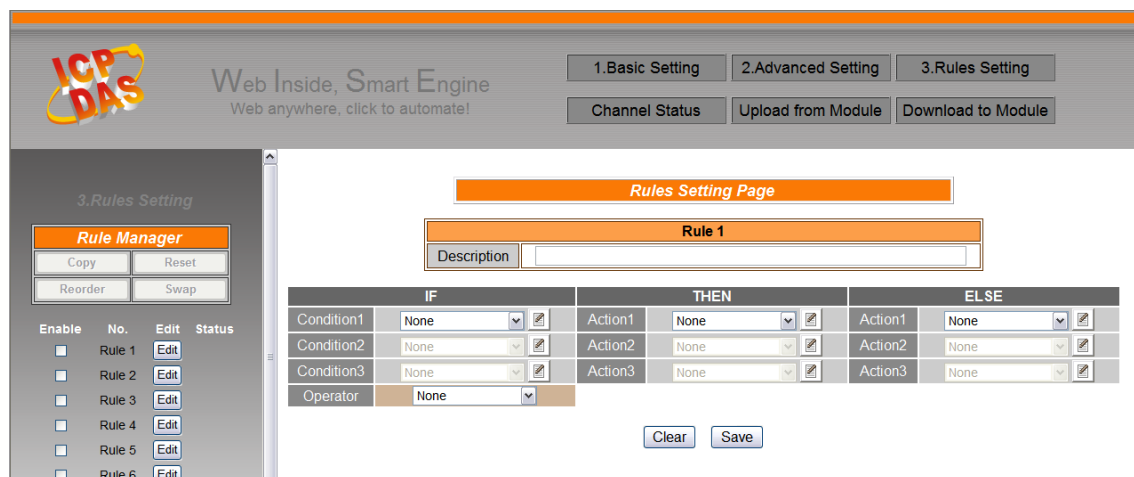
Modify the Alias of the WISE module, Ethernet setting of the WISE module, the analog input/output range, or the downloading password in the Basic Setting page as needed.

## Step 5: Edit Advanced Settings

Edit channel attribute, internal register, Timer, Email, CGI commands, Recipe, and P2P configuration settings in the Advanced Setting page as needed.

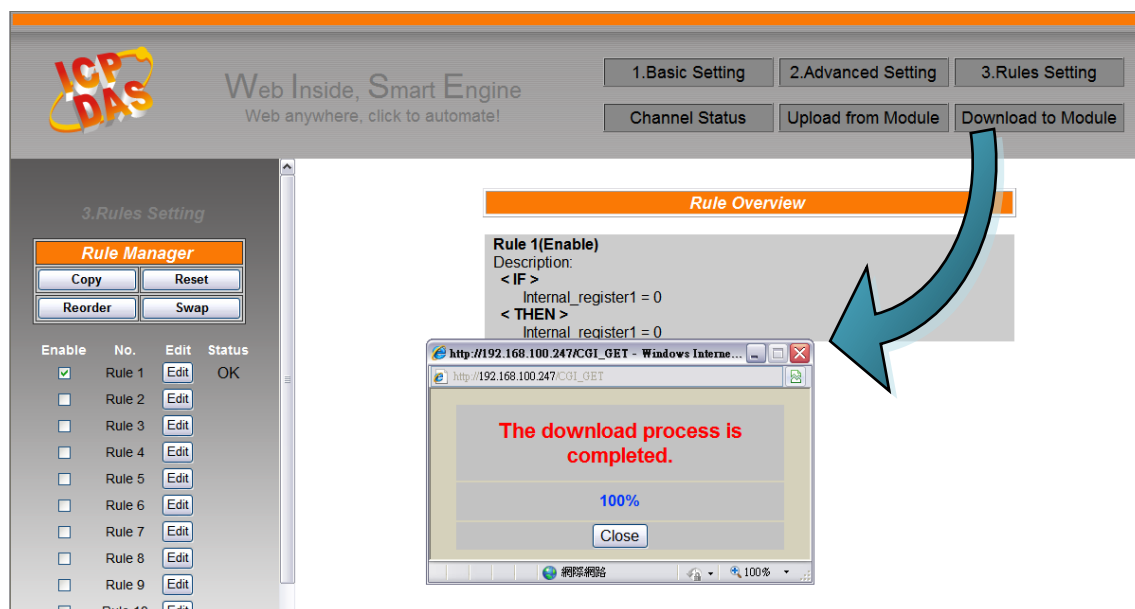
## Step 6: Edit Rule Settings

Edit your IF-THEN-ELSE rules in the Rules Setting page.



## Step 7: Download to Module

After finishing rules setting, download the rules to the WISE module. The WISE module will reboot and execute the rules automatically.



## Step 8: For more detail information, please refer to WISE User Manual