

Quick Start Guide for WISE-580x Series

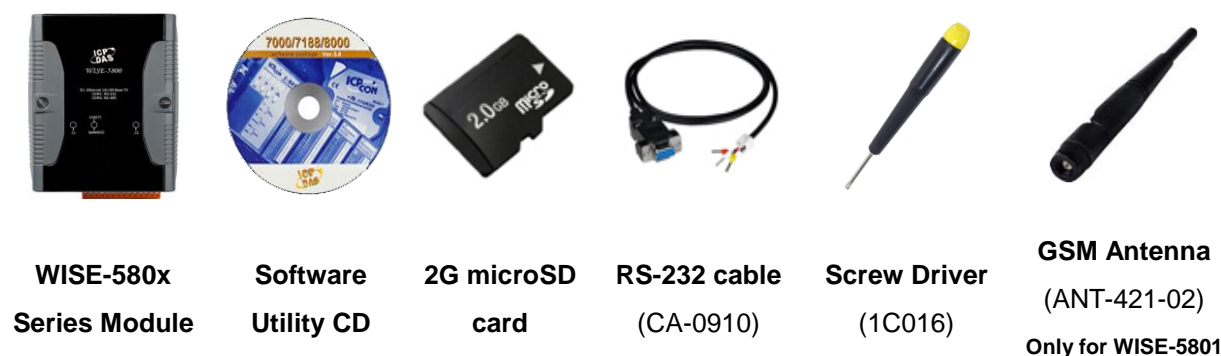
May 2012, Version 1.2

Welcome!

Thank you for purchasing WISE-580x – the Intelligent Data Logger PAC controller for remote monitoring and control application. This Quick Start Guide will provide you with minimum information to get started with WISE-580x. It is intended for use only as a quick reference. For more detailed information and procedures, please refer to the full user manual on the CD included in this package.

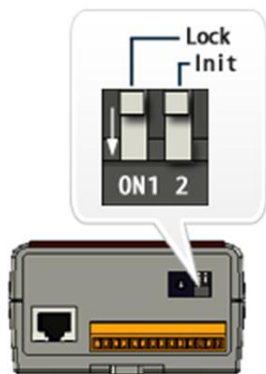
What's In the Box?

In addition to this guide, the package includes the following items:



Technical Support

- **WISE-580x User Manual**
CD:\WISE-580x\document\User Manual\
http://ftp.icpdas.com/pub/cd/wise_cd/wise-580x/document/user_manual/
- **WISE Website**
<http://wise.icpdas.com/index.html>
- **ICP DAS Website**
<http://www.icpdas.com/>

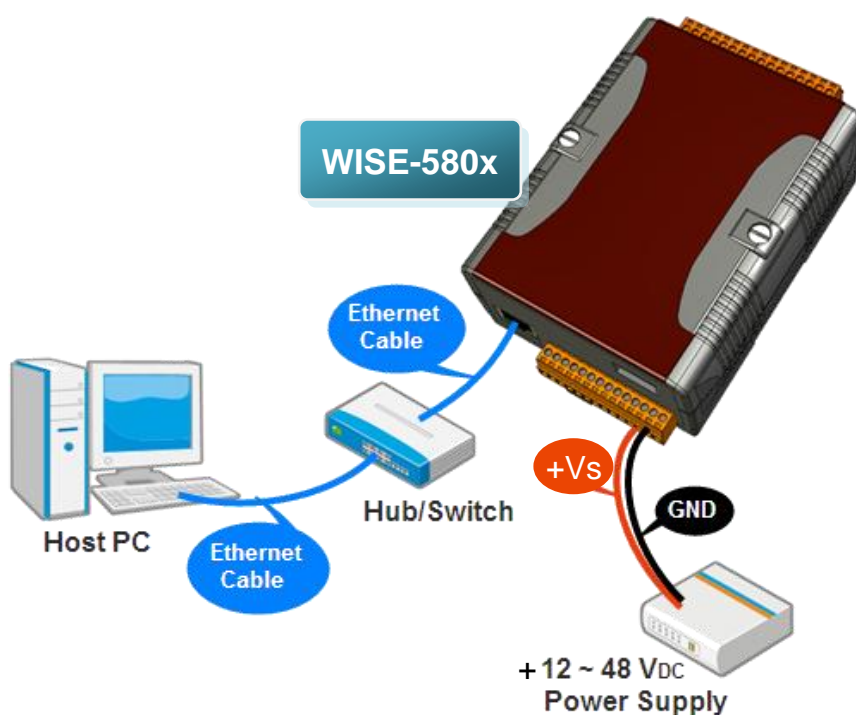


1 Configuring Boot Mode

Make sure the “Lock” switch placed in the “OFF” position, and the “Init” switch placed in the “OFF” position.

2 Connecting to PC, Network and Power

The WISE-580x is equipped with an RJ-45 Ethernet port for connection to an Ethernet hub/switch and PC. You can also link directly the WISE-580x to PC with an Ethernet cable.



3 Installing the MiniOS7 Utility

Step 1: Get the MiniOS7 Utility



The MiniOS7 Utility can be obtained from companion CD or our FTP site:

<CD:\Tools\MiniOS7 Utility\>

ftp://ftp.icpdas.com/pub/cd/8000cd/napdos/minios7/utility/minios7_utility/

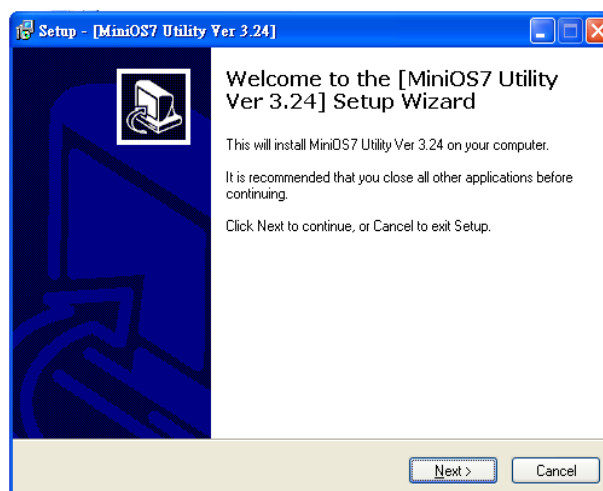
Please download version v3.2.4 or later.

Step 2: Follow the prompts to complete the installation



MiniOS7 Utility Ver 3.24

After the installation has been completed, there will be a new short-cut for MiniOS7 Utility on the desktop.



4 Using MiniOS7 Utility to Assign a New IP

The WISE-580x is an Ethernet device, which comes with a default IP address, therefore, you must first assign a new IP address to the WISE-580x.

The factory default IP settings are as follows:

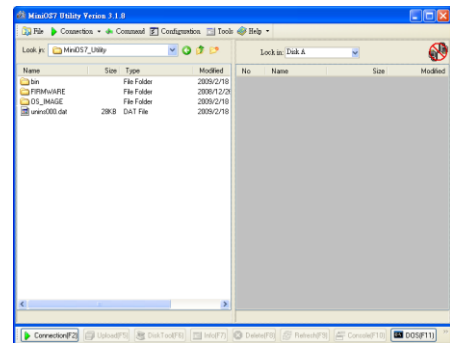
Item	Default
IP Address	192.168.255.1
Subnet Mask	255.255.0.0
Gateway	192.168.0.1

Step 1: Run the MiniOS7 Utility



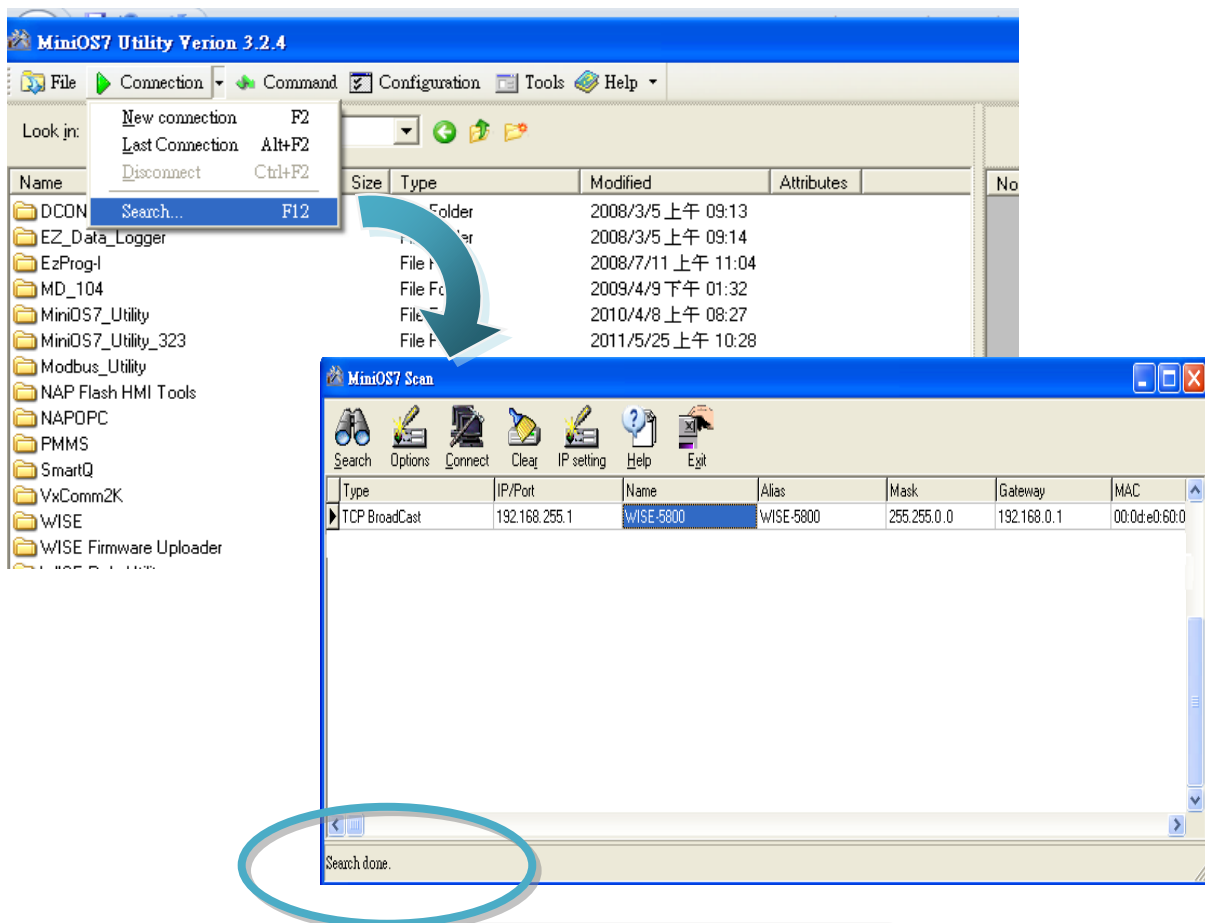
MiniOS7 Utility Ver 3.24

Double-click the MiniOS7 Utility shortcut on your desktop.



Step 2: Press "F12" or choose "Search" from the "Connection" menu

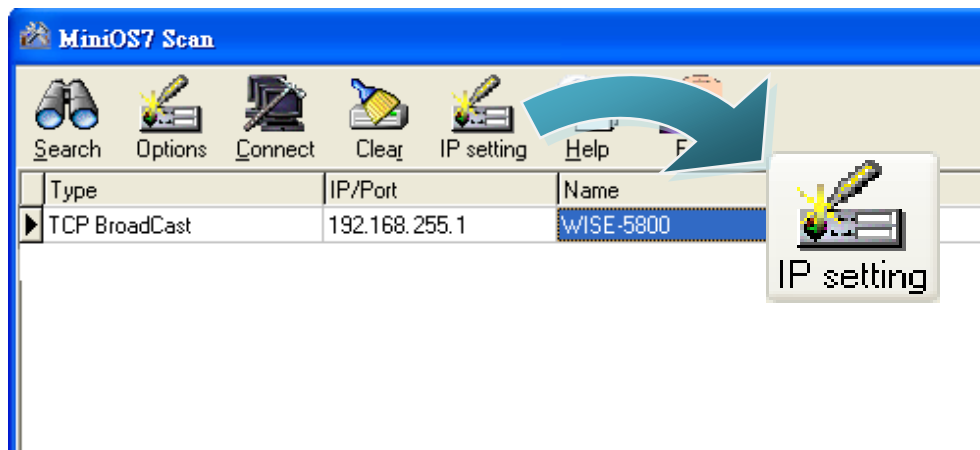
After pressing F12 or choosing "Search" from "Connection" menu, the MiniOS7 Scan dialog will appear, that will display a list of all the MiniOS7 modules on your network.



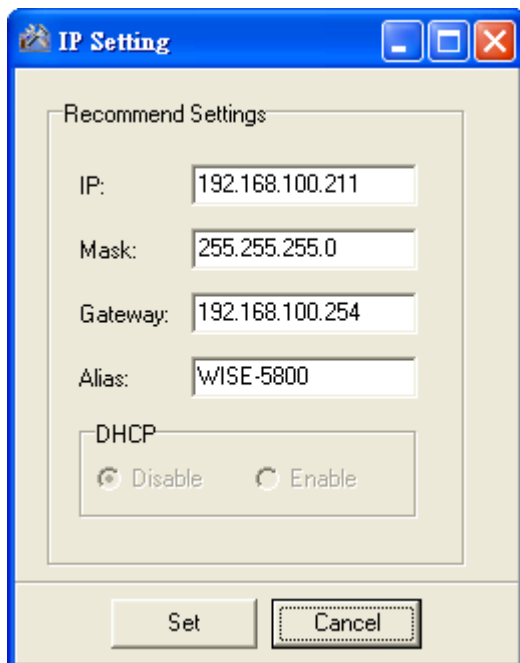
See the status tip, waiting for the search to be done.

Step 3: Choose the module name and then choose “IP setting” from the toolbar

Choose the module name for fields in the list, and then choose IP setting from the toolbar.

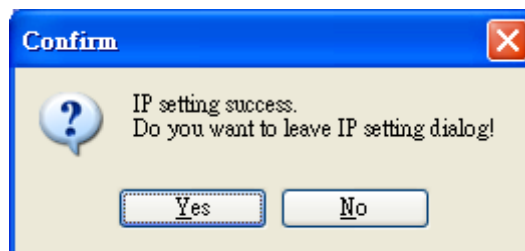


Step 4: Assign a new IP address and then choose “Set” button



Step 5: Choose “Yes” button & Reboot WISE-580x

After completing the settings, press the Yes button in the Confirm dialog box to exit the procedure, then reboot WISE-580x..



5 Go to WISE-580x Web Site to edit Control Logic

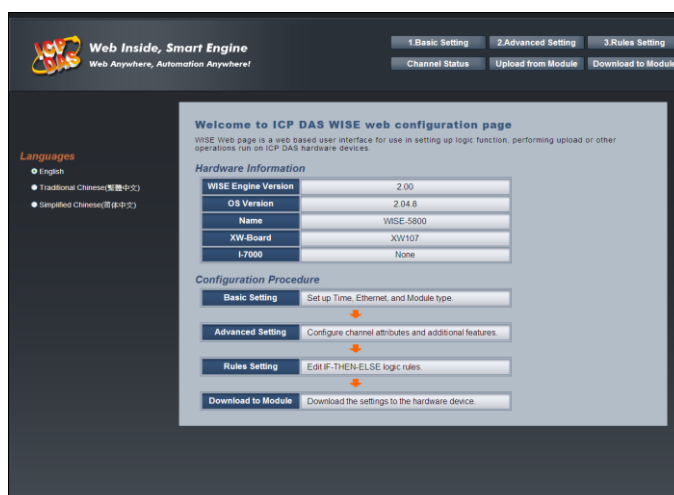
Please follow the steps below to implement IF-THEN-ELSE control logic on controllers:

Step 1: Open a browser, and type in the URL address of the WISE-580x

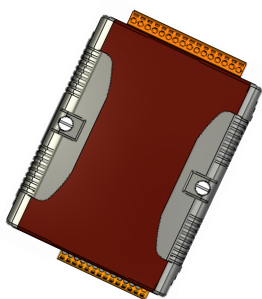
Open a browser (recommended using Internet Explorer, new version is better). Type in the URL address of the WISE-580x module in the address bar. Make sure the IP address is accurate.

Step2: Get on the WISE-580x web site

Get on the WISE-580x web site. Login with the default password “wise”. Implement the control logic configuration in the order (Basic Setting→Advanced Setting→Rule Setting→Download to Module), then complete the IF-THEN-ELSE rule editing.



Step 3: For more detail information, please refer to WISE User Manual



WISE-580x 系列快速安裝指南

May 2012, Version 1.2

歡迎使用 WISE-580x 快速安裝指南

感謝您購買 WISE-580x 系列控制器：多功能智慧型資料記錄(Data Logger) PAC 控制器。本『快速安裝指南』提供 WISE-580x 系列安裝入門所需資訊，如需更詳細的安裝及使用說明，請參閱更完整的使用手冊。

產品內容

除了本『快速安裝指南』外，此產品內容還包括以下配件：



WISE-580x
模組



軟體工具
光碟



2.0GB microSD
記憶卡



RS-232 纜線
(CA-0910)



螺絲起子
(1C016)



GSM 天線
(ANT-421-02)
僅提供 WISE-5801

技術支援

- **WISE-580x User Manual**

CD: WISE-580x\document\User Manual\

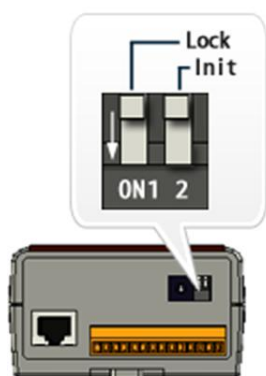
http://ftp.icpdas.com/pub/cd/wise_cd/wise-580x/document/user manual/

- **WISE Website**

<http://wise.icpdas.com/big5/index.html>

- **ICP DAS Website**

<http://www.icpdas.com/>

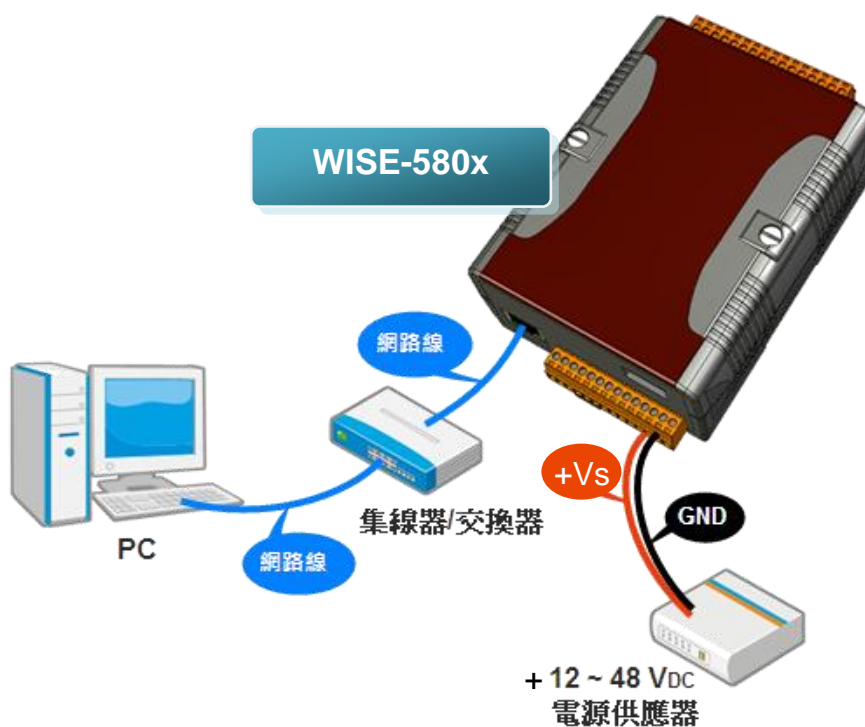


1 檢視啟動模式

確認指撥開關 Lock 的位置在 "OFF"，Init 的位置在 "OFF"。

2 連接主機、網路及電源

WISE-580x 系列配有標準的網路接口 RJ-45，可透過網路集線器/交換器與 PC 連接，也可直接連到 PC 的網路接口。



WISE-580x 快速安裝指南

3 安裝 MiniOS7 Utility

步驟一：取得 MiniOS7 Utility



MiniOS7 Utility 可取自隨附的光碟或 FTP:

<CD:\Tools\MiniOS7 Utility\>

ftp://ftp.icpdas.com/pub/cd/8000cd/napdos/minios7/utility/minios7_utility/

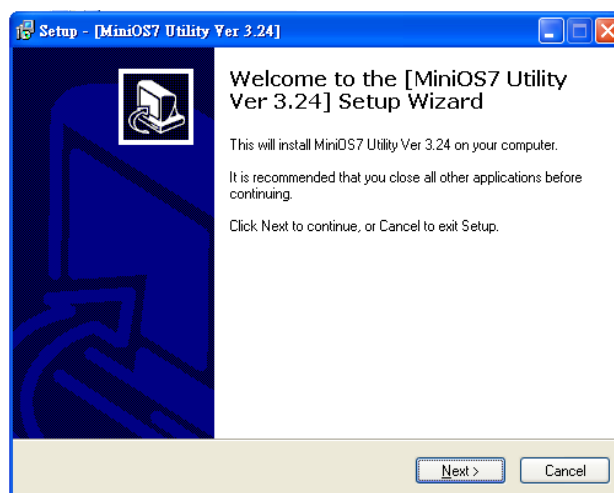
請下載 v3.2.4 以後的版本。

步驟二：按照命令提示完成安裝



MiniOS7 Utility Ver 3.24

安裝完成後，桌面上將會出現 MiniOS7 Utility 的捷徑圖示



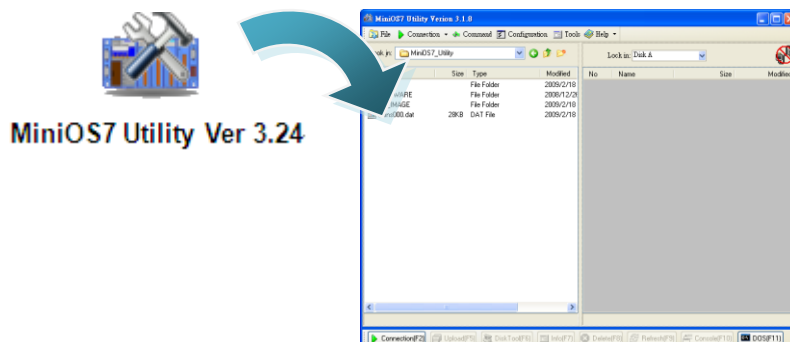
4 啟動 MiniOS7 Utility 設定 IP 位址

WISE-580x 系列模組在出廠時會統一預設網路設定值，使用者可以依照下列步驟自行變更網路設定。WISE 模組的網路出廠預設值：

項目	預設值
IP 位址	192.168.255.1
子網路遮罩 (subnet mask)	255.255.0.0
通訊閘 (gateway)	192.168.0.1

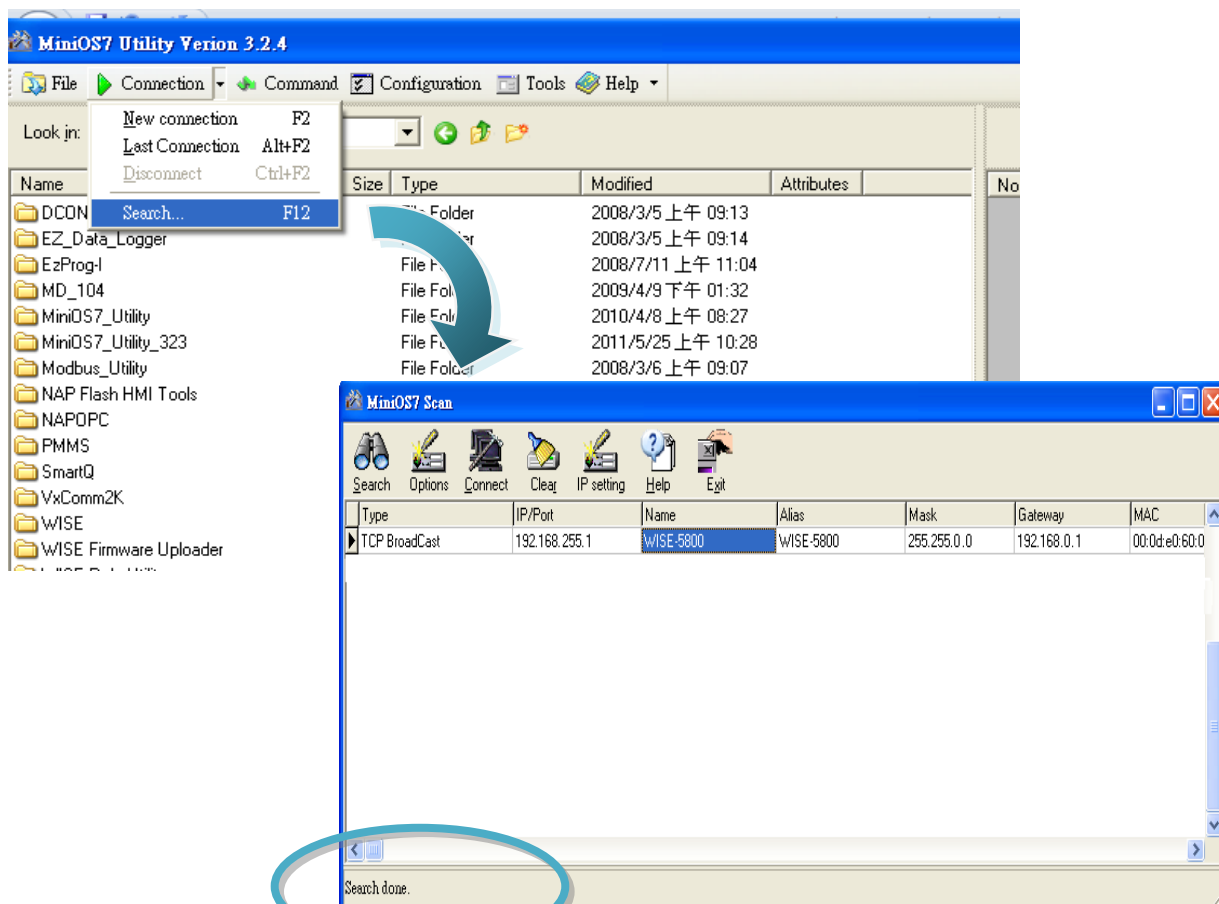
步驟一：啟動 MiniOS7 Utility

雙擊 MiniOS7 Utility
桌面捷徑



步驟二：選取鍵盤 “F12” 或於 “Connection” 選單中選取 “Search”

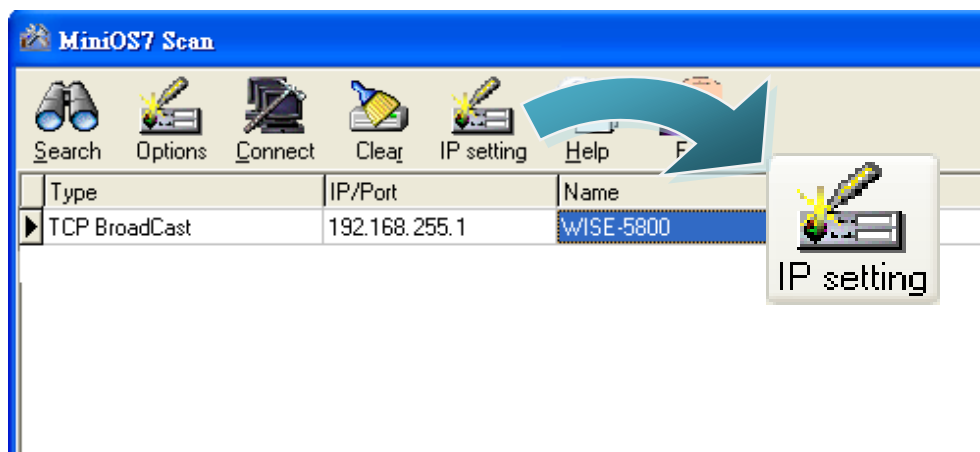
選取鍵盤 F12 或於 Connection 選單中選取 Search 後，會出現 MiniOS7 Scan 對話視窗顯示網路上已啟動的 MiniOS7 模組



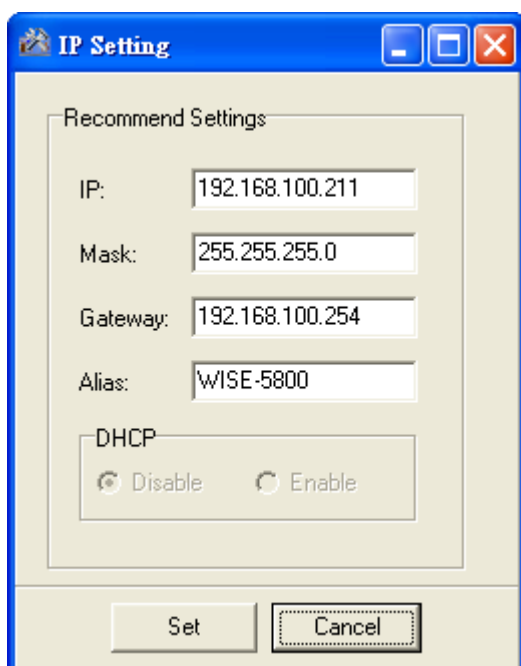
確認狀態欄上顯示模組搜尋
完畢(Search Done).

步驟三：選取模組名稱後移到工具列選取 “IP setting”

於清單上選取模組名稱後移到工具列選取 IP setting

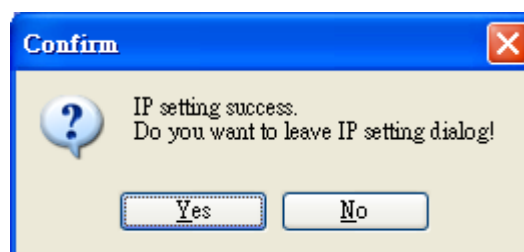


步驟四：設定新 IP 後選取 “Set” 鈕



步驟五：選取 “Yes” 鈕後，請重新開機 WISE-580x

完成設定後，於 **Confirm** 對話視窗選取 **Yes** 鈕結束程序。隨後請重新開機 WISE-580x。



5 前往 WISE 規則設定網頁

使用者透過 WISE 控制器所提供的規則設定網頁，只需使用滑鼠點選設定，即可完成控制器上工作邏輯的規劃。

步驟一：開啟瀏覽器，填入 WISE 控制器 IP 作為瀏覽器的 URL 位址

開啟電腦上的瀏覽器(推薦使用 IE，新版瀏覽器尤佳)，輸入 WISE 控制器的 IP 作為 URL 位址(如有重新設定 IP，請確認所輸入 IP 是否正確)。

步驟二：進入 WISE 規則設定頁面

進入 WISE-580x 控制器所提供的規則設定頁面，使用預設密碼“wise”登入後，僅需依照首頁上的設定流程(基本設定→進階設定→規則設定→規則下載)，即可完成 WISE 控制器的邏輯規則編排。



步驟三：設定流程中的細節，請參照 WISE 操作手冊

WISE-580X 快速安裝指南