

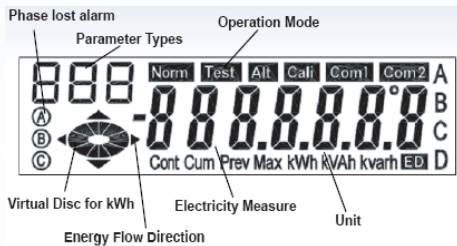
# PM-3310

## Clip-on CT Smart Power Meter

### Features



- Clip-on type CT, Easy wiring for on-line installation
- With wired clip-on CT (various types support input current up to 1000A)
- Wh accuracy better than 0.5% (PF=1)
- Up to 10000 load profile records with configurable recording period
- RS-485 communication supported Modbus protocol



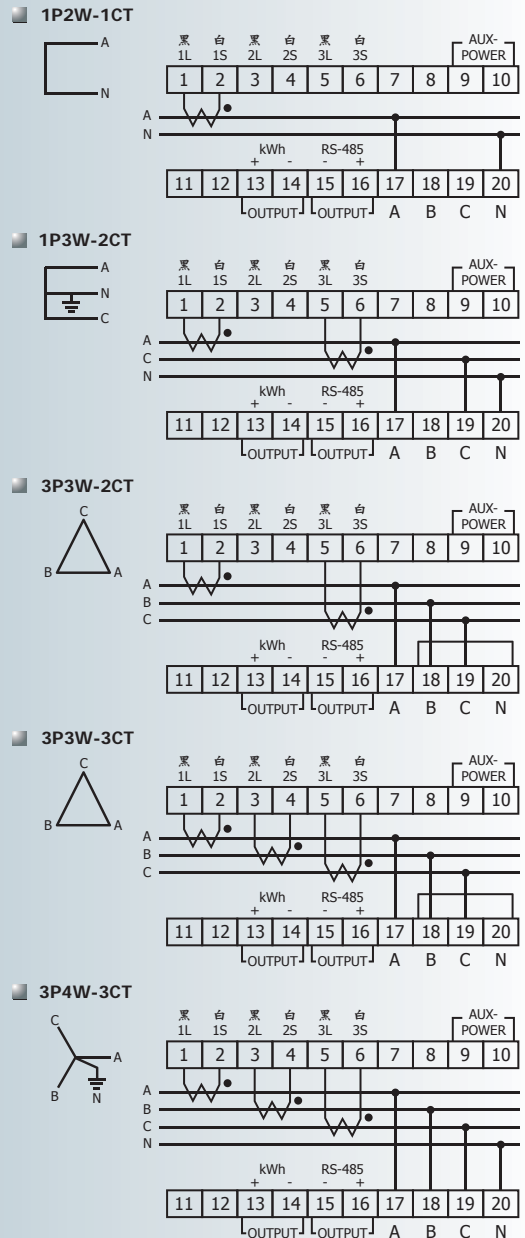
### Introduction

PM-3310 is designed for electric power monitoring and load recording for single or three phase systems. It can be directly used in low voltage systems due to its wide range measurement (up to 1000A). PM-3310 can also maintain better than 1% (IEC-62035-21) accuracy even under low current condition (< 5A), thus it still can be used in middle to high voltage system. The unique features of PM-3310 including: Clip-on type CT, bi-directional measurement, long time load recording, and standard communication. Its compact size, easy installation, and low cost make PM-3310 suitable for modern electricity monitoring and load investigation.

### Specification

<b>Input Voltage</b>	AC 96 ~ 418V
<b>Input Current</b>	CT Φ10 (60A), CT Φ16 (120A), Φ24 (200A), Φ31.6 (400A), Φ50.8 (1000A)
<b>AUX. Power</b>	AC 96 ~ 242V
<b>kWh Accuracy</b>	pf=1, <0.5%, pf=0.5 <1%, better than IEC-62053-21
<b>Frequency</b>	50/60 Hz
<b>Display</b>	Mono LCD
<b>Wiring</b>	Auto detection, 1P2W, 1P3W, 3P3W-2CT, 3P3W-3CT, 3P4W
<b>Communication</b>	RS-485, half duplex isolated Baud Rate: 9600, 19200 Protocol: Modbus RTU
<b>Load Profile</b>	2 groups, group 1 max. 12 channels, group 2 max. 8 channels VL-Nave, I ave, kWtot, kvatot, kvarh+, kvarh-, kvarh+, kVAh kWh+, kWh-, kvarh+, kvarh-, kVAh Programmable interval Max store: 104 days (interval=15 mins)/channel
<b>RTC</b>	with 800 mAh battery (backup time, more than 7 years)
<b>Measures</b>	VA-N, VB-N, VC-N, VL-Nave VA-B, VB-C, VC-A, VL-Lave I A, I B, I C, I ave PFA, PFB, PFC kWA, kWb, kWc, kWtot kvarA, kvarB, kvarC, kvatot kvaA, kvaB, kvaC, kvatot Wh+, Wh-, VArh+, VArh-, VAh
<b>Surge Winstand</b>	ANSI C37.90.1
<b>Dimension (L x W H)</b>	110 mm x 75 mm x 120 mm
<b>Operation Temperature</b>	0 °C ~ +60 °C
<b>Installation</b>	Rail-mounted
<b>Terminals</b>	2 x 10 terminals, IP20

### Wiring Diagram



### Ordering Information

PM-3310 - [ ] - [ ]

**CT size (measurement)**  
 400: CTΦ31.6 mm  
 (Measuring range: 100 ~ 400A)  
 1000: CTΦ50.8 mm  
 (Measuring range: 200 ~ 1000A)

**Communication**  
: Modbus RTU